

Welcome to  
Miss Erskine's Class

These are the adults that will be working in your classroom.

Miss Erskine  
Your Class Teacher



Mrs Tanner  
Learning Support Assistant  
(LSA)



# These are the adults that will be working in Year 4.

**Mrs Mujik**  
Year 4 Teacher



**Ms Spray**  
Year 4 Teacher



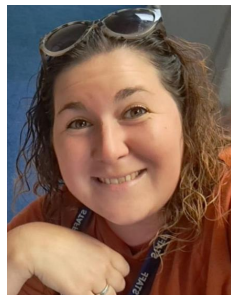
**Miss Erskine**  
Year 4 Teacher



**Mrs Hulcoop**  
Year 4 Learning  
Support Assistant  
(LSA)



**Mrs Tanner**  
1:1 Learning Support  
Assistant (LSA)



**Mrs Cunningham**  
1:1 Learning Support  
Assistant (LSA)



**Mrs Lewsley**  
1:1 Learning Support  
Assistant (LSA)

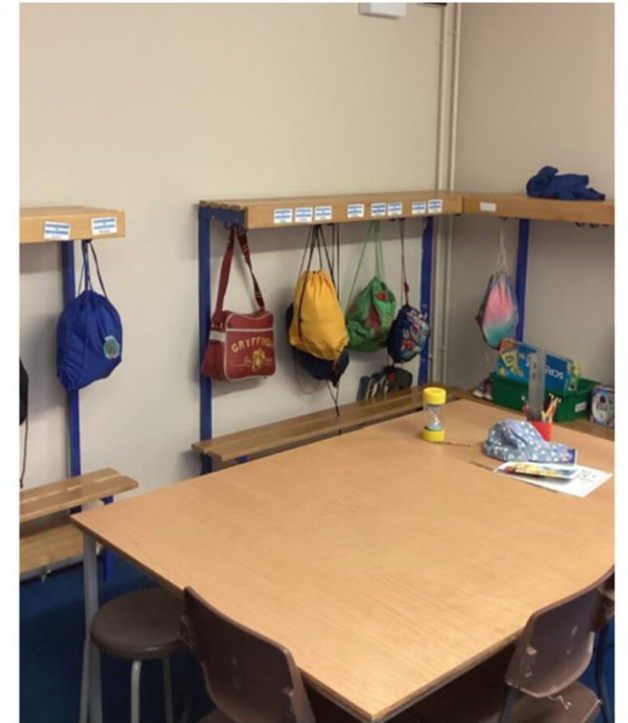


**Mrs Marr**  
Year 4 Learning  
Support Assistant  
(LSA)





This is your classroom.



This is where you will enter the school and your classroom.

This is where you will hang your coat and book bag.





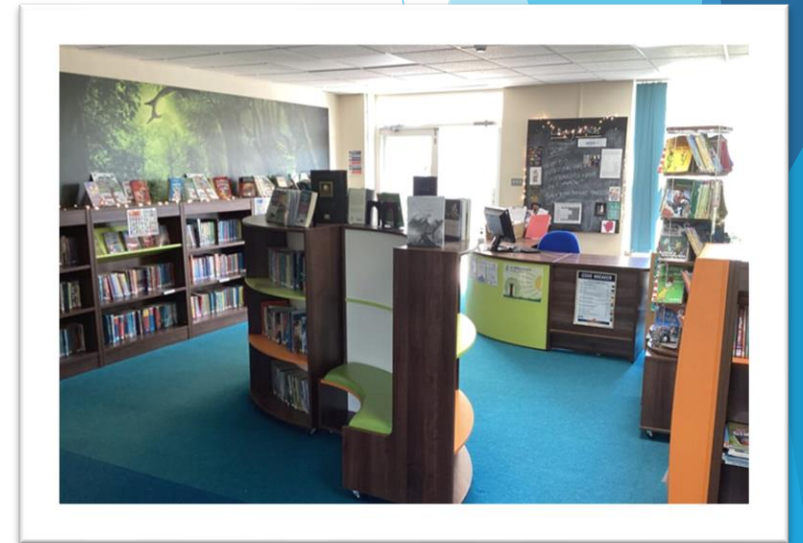
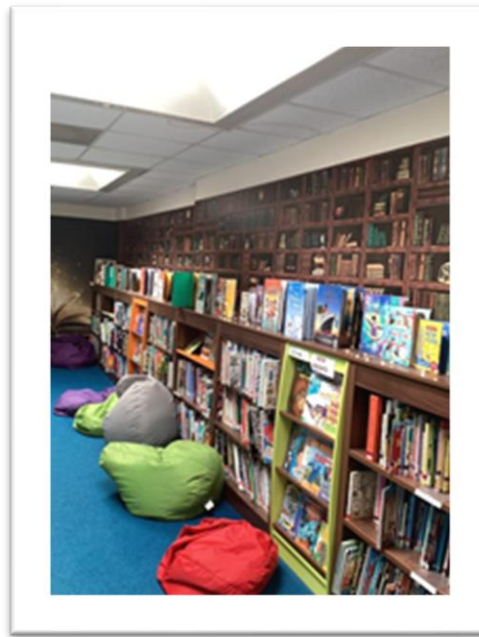
This is the area outside of Year 4 where you may sometimes work.



These are the class / year group toilets.



This is the KS2 Hall where you will have lunch and assemblies.



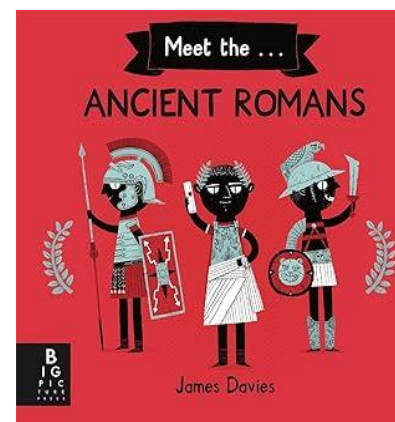
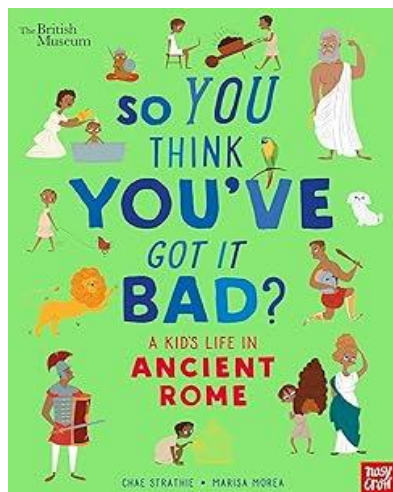
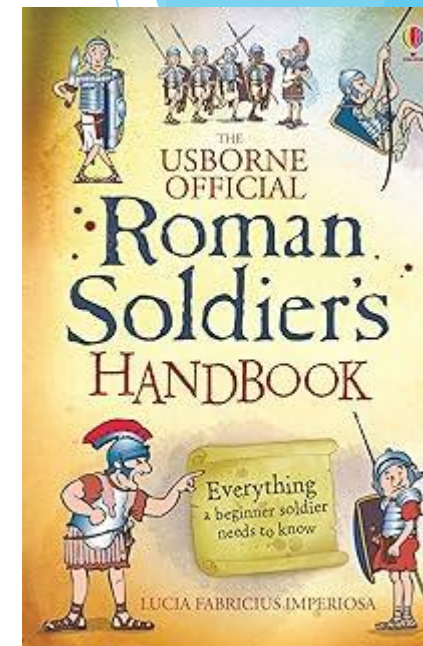
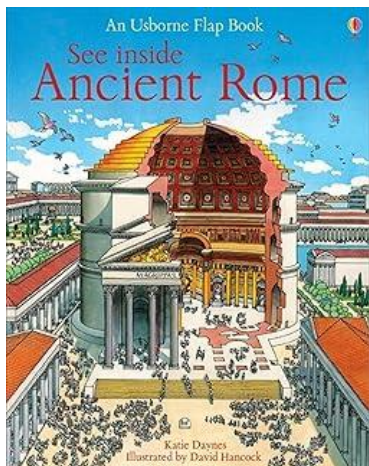
This is the KS2 library



This is your playground and field



When you return to school your topic theme will be Why did the Romans settle in Britain? You might like to start exploring some of these books during the summer holidays.





We are really looking forward  
to seeing you in September.

